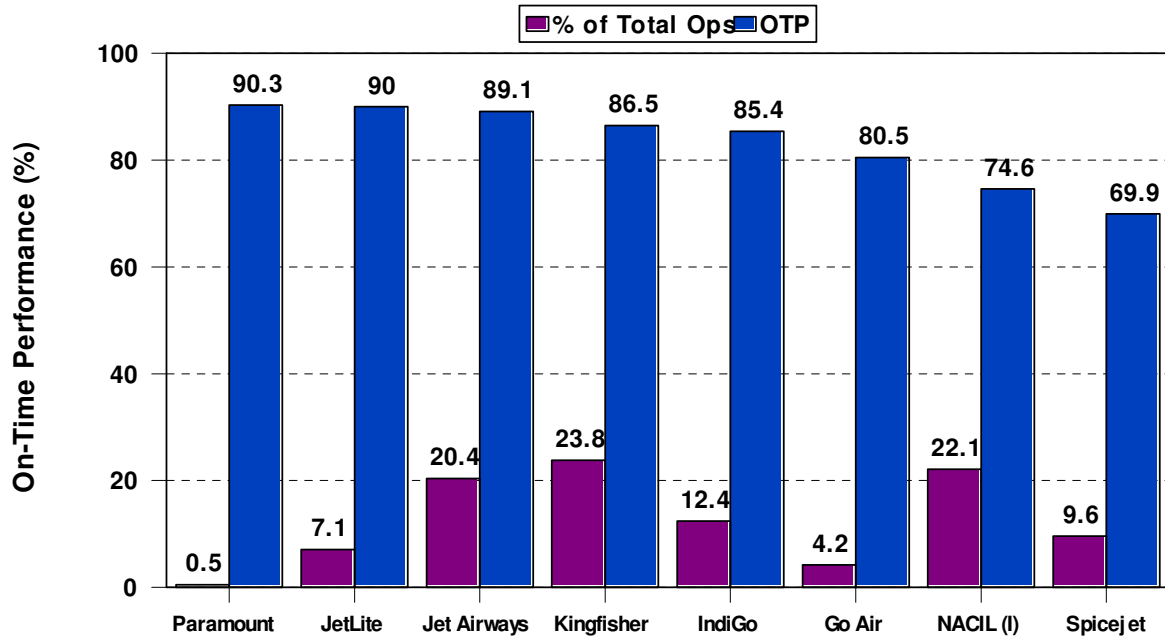


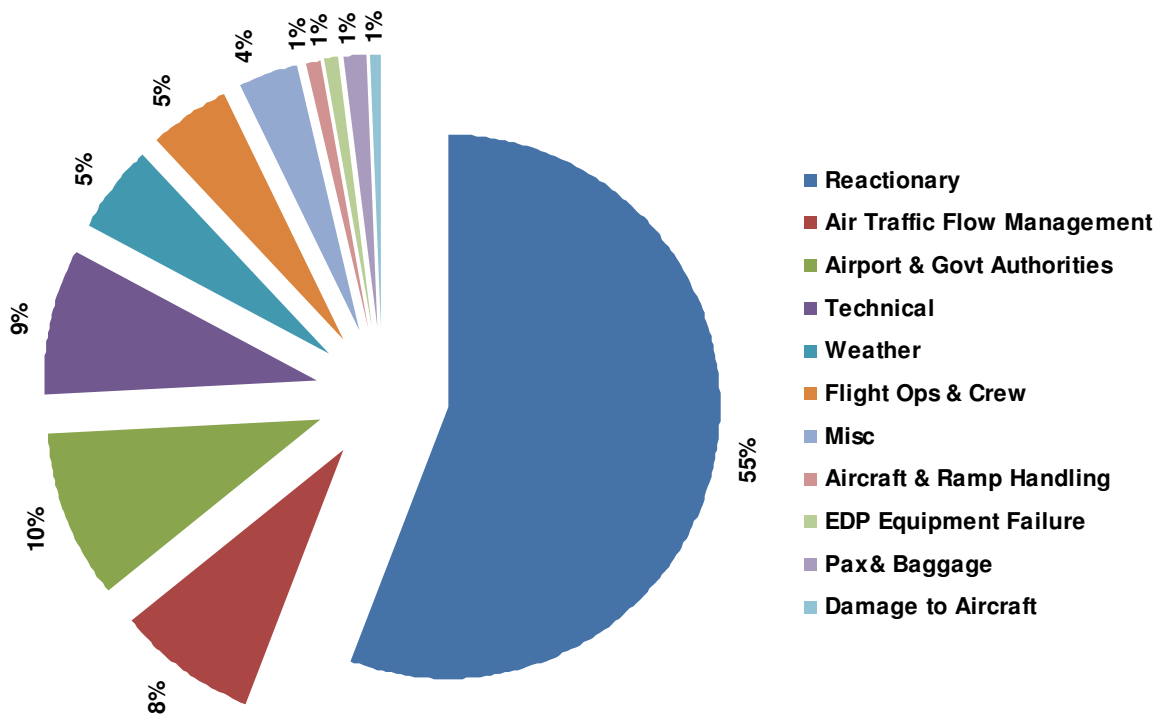
ON-TIME PERFORMANCE (OTP)

a) Scheduled Domestic Airlines

- Overall OTP (Jul 2010) – 82.7%

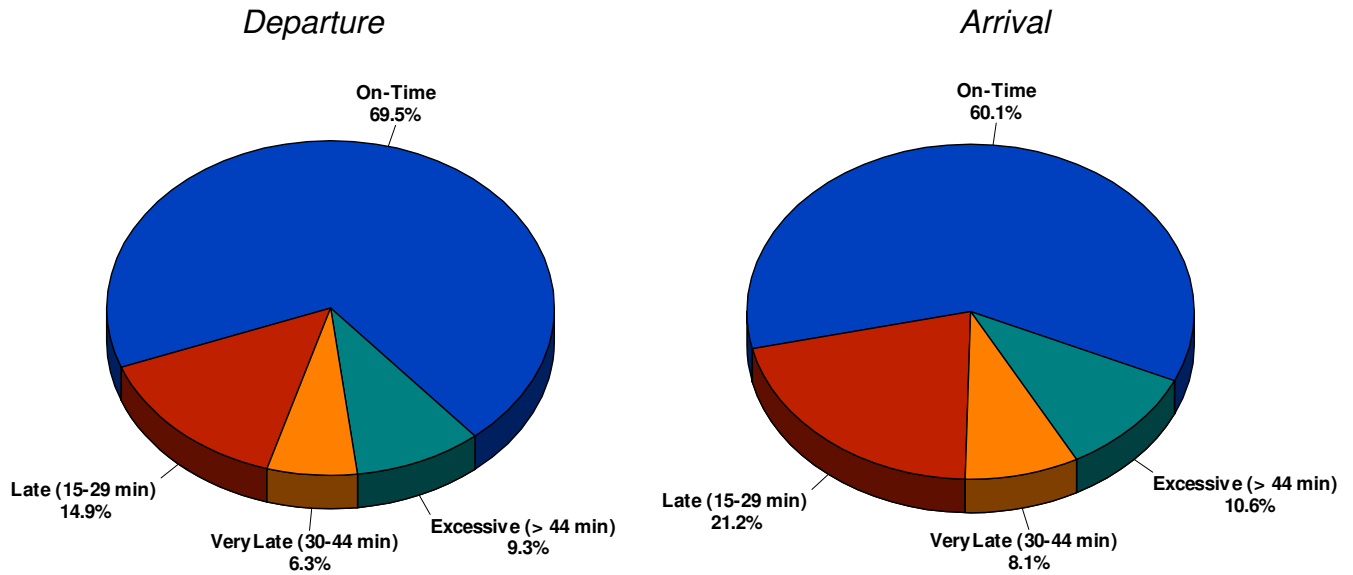


REASONS OF DELAY

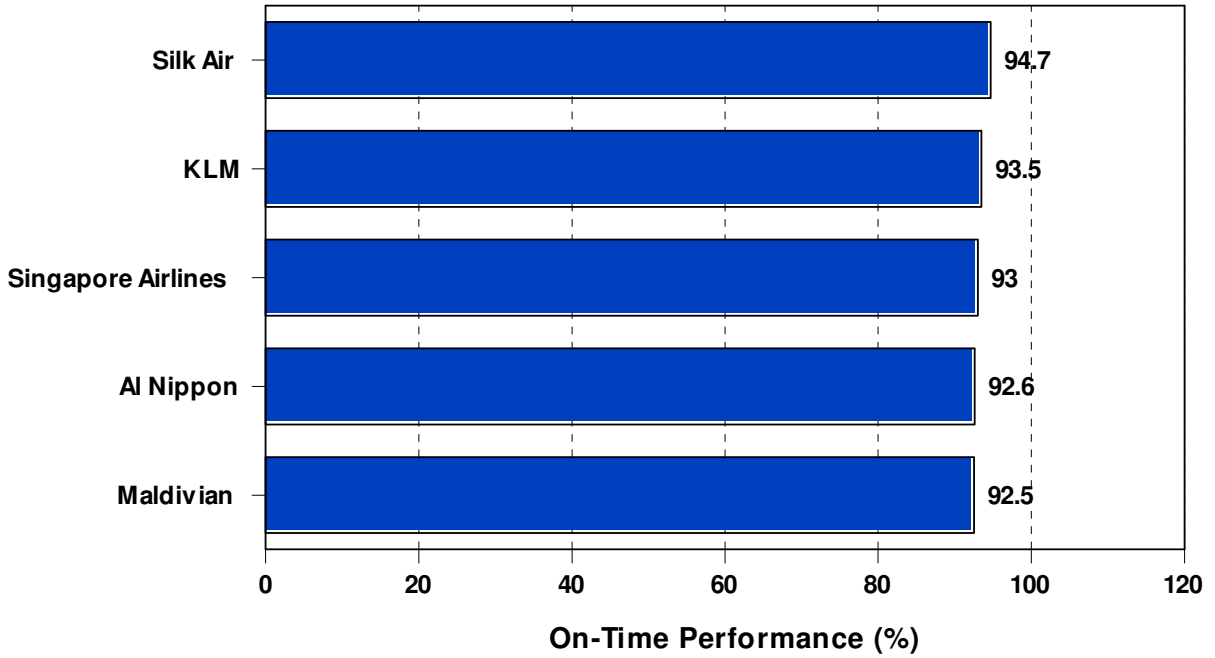


b) Foreign Carriers

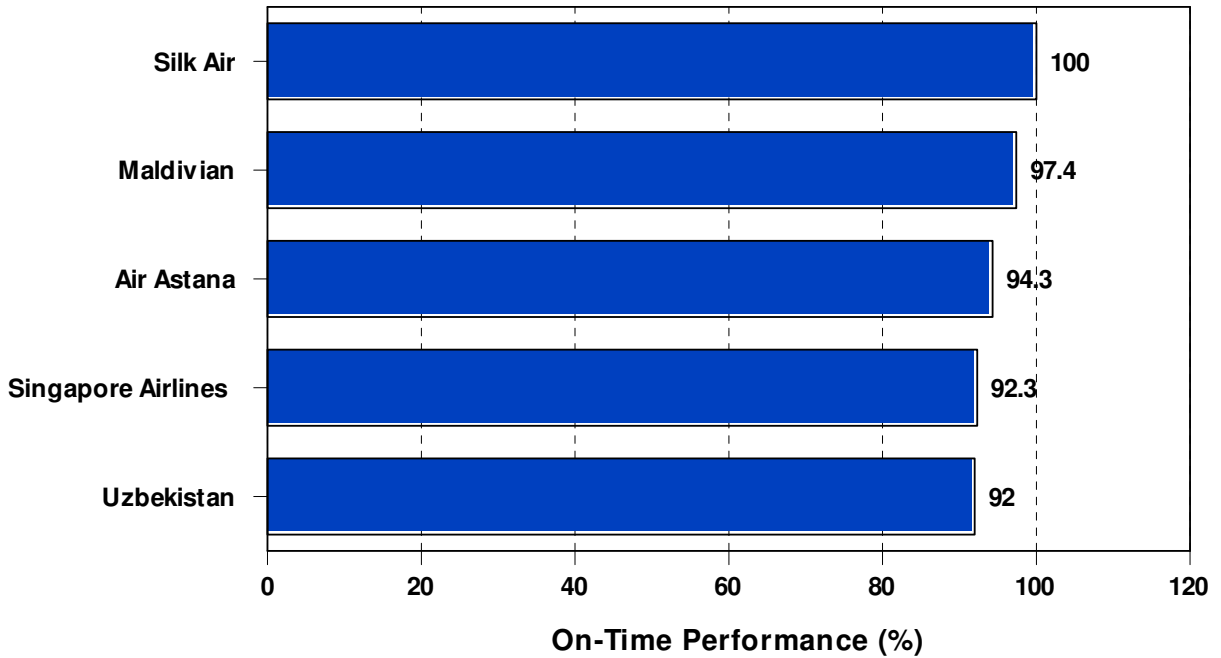
- 70 foreign carriers operating to/from India. At the time of compilation of this report, OTP data of 48 carriers was received.
- Overall On-Time Performance (OTP) of these 48 carriers is as follows:
 - 69.5% (departures)
 - 60.1% (arrivals)



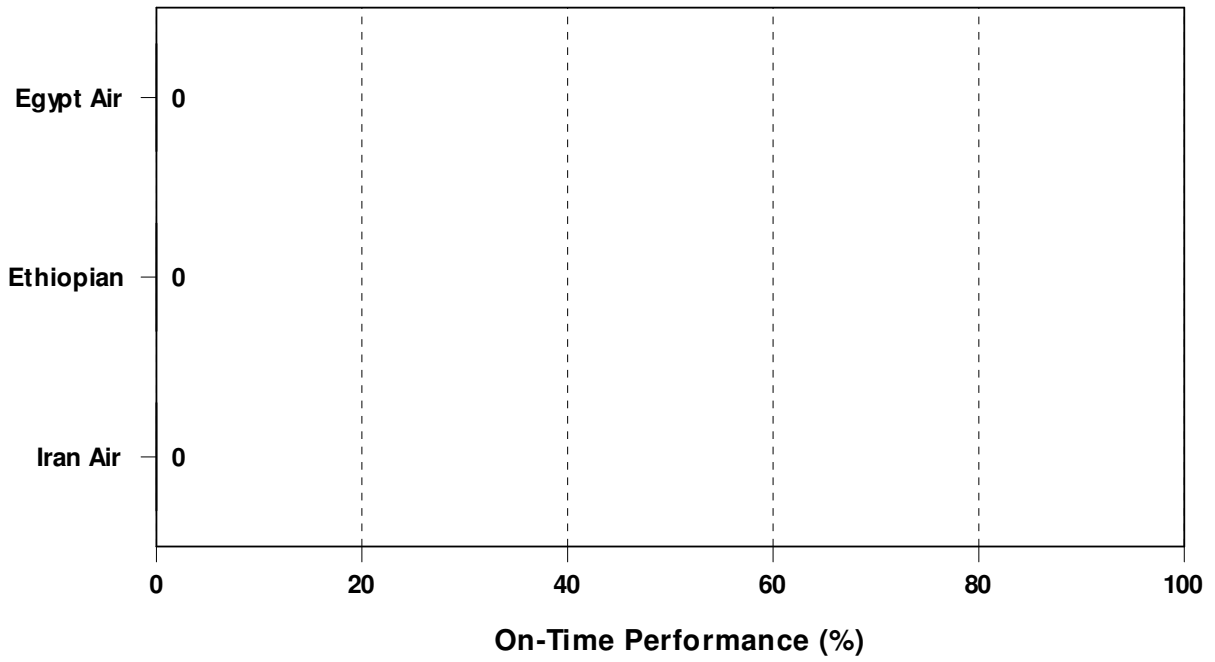
Five Airlines Having Highest OTP (Departures)



Five Airlines Having Highest OTP (Arrivals)



Three Airlines Having Lowest OTP (Departures)



Three Airlines Having Lowest OTP (Arrivals)

